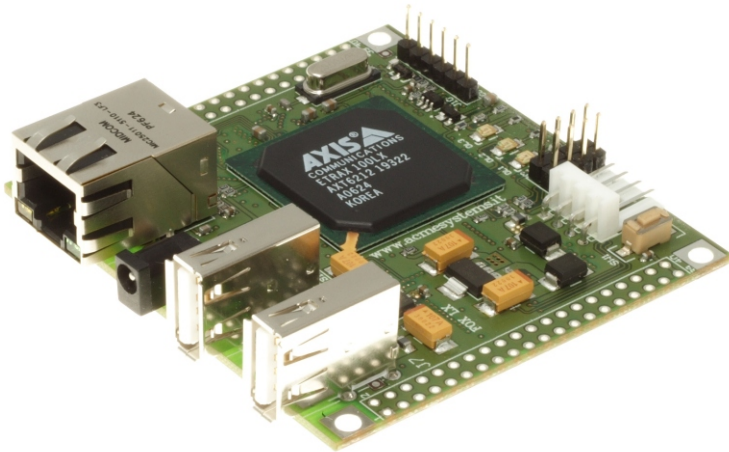


FOX Board

A LINUX CORE ENGINE IN JUST 66x72mm



The FOX Board is an Embedded Linux Core Engine with reduced size and low power requirements especially designed to enable an easy integration of your design with standard LAN and Internet WEB protocols and applications.

Two slots for 20x2 pins strip step 0,1" (2.54mm) can be used to connect the FOX Board with your application specific board to transform it into an Embedded Linux product ready to go on Internet.

FOX Board reduces at a minimum the design effort and the time to market for devices that need to have WEB interface, multitasking, USB devices management, storage of data and all advantages that come from the use of a modern and advanced Operating System.

A completely free and Open Source Software Development Kit enables a strong customization of Linux Kernel to tailor it for the best integration with your application.

A strong international community of developers support answers quickly to any technical question and offers huge possibilities to find professional and FOX skilled designers able to help or develop for your project based on FOX Board.



<http://www.acmesystems.it>

TECHNICAL FEATURES

Microprocessor: Axis ETRAX 100 LX
100MIPS, 32bit, RISC architecture

Memory: up to 64MB of RAM and up to 32MB of FLASH (*)

Interfaces: 1 Ethernet 10/100Mb port, 2 USB host 1.1 ports, slots for two 20x2 pin strip step 2.54 mm with up to 48 I/O lines, I2C bus, SPI, serial and parallel ports (**)

Power supply: 5 Volt, 1 Watt.

Operating System: Linux Kernel 2.4.x e 2.6.x

Development kit: Available for free under GPL license.

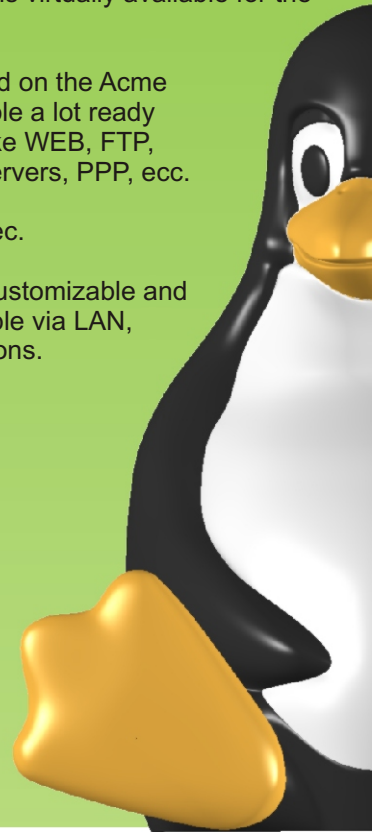
Programming languages: C, C++, Java, PHP, Python, TCL, etc.

Available software: All the Open Source software for Linux is virtually available for the FOX Board.

Inside the SDK and on the Acme Systems is available a lot ready to use software like WEB, FTP, Telnet and SSH servers, PPP, etc.

Bootstrap: <10 sec.

Firmware: Fully customizable and remotely upgradable via LAN, Web or FTP sessions.



(*) The basic memory config is 16MB of ram and 4MB of flash.

(**) Not all the lines are available at the same time.

This document is subject to change without prior notice.

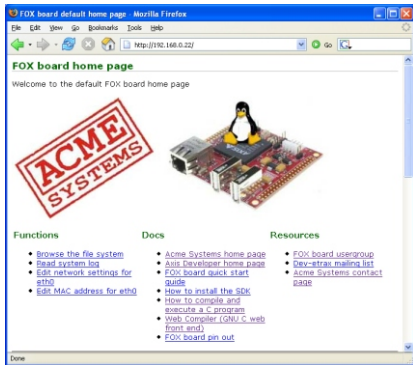
The term "Linux" is a registered trademark of Linus Torvalds, the original author of the Linux kernel. Linux Penguin, "Tux", was created by Larry Ewing.

FOX Board LINUX EMBEDDED CORE ENGINE

PREINSTALLED SOFTWARE

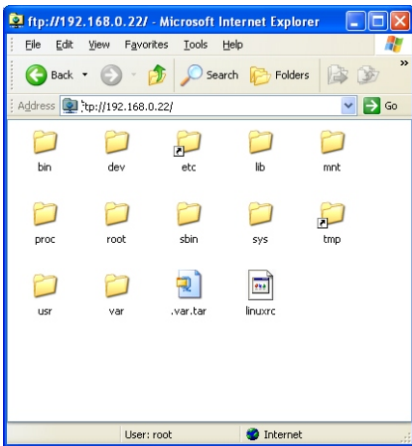
A SERVER WEB

to share html document on the web or to build dynamic web interfaces to remotely control your devices.



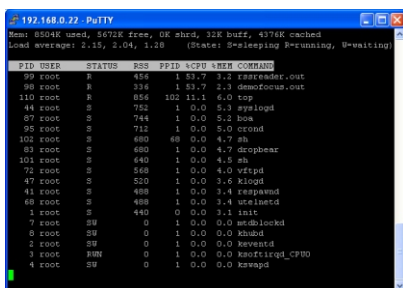
A FTP and SSH SERVER

to have access to the internal filesystems on integrated FLASH and RAM and make remotely file transfer files in clear or encrypted mode. FOX Board can share also USB keys or USB external hard disks.



TELNET SERVER

to have a remote fully access to the operating system console.



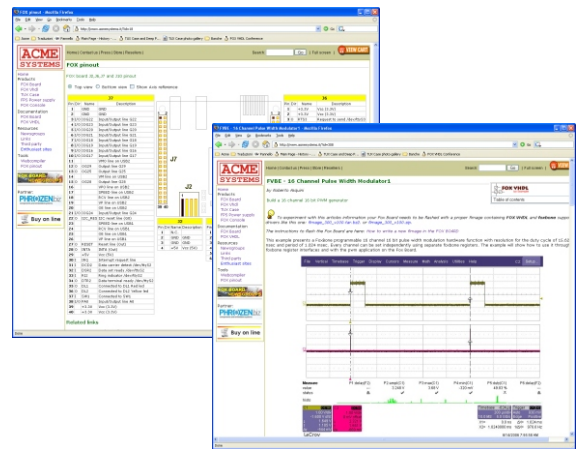
TECHNICAL SUPPORT

DIRECT SUPPORT

the Acme Systems designer are available by email to provide suggestions on how to design your specific application powered by FOX Board.

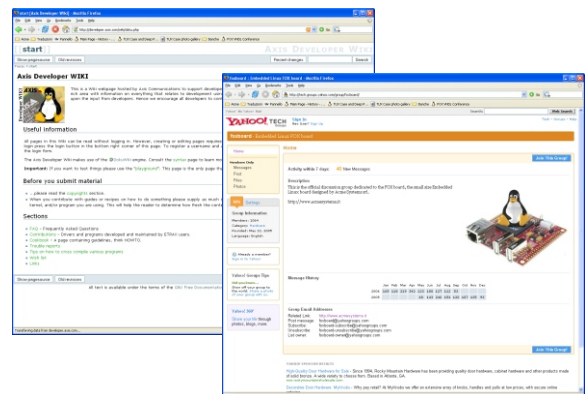
WEB SITE

on the Acme Systems Web site are available tens of articles, application notes, links, tutorials, schematics and how tos to make easy your design.



NEWSGROUPS AND MAILING LISTS

more than one thousand of FOX users are available on the FOX related newsgroups to share ideas, provide tips and tricks or help you to begin.



THIRD PARTY

a lot of carrier boards of third party are already available for specific applications. Hardware and software designer are reachable through the Acme Systems web site to design your own custom application.